
INTRODUCTION

Deciding what subjects you wish to study at Sixth Form is one of the most important decisions you will have to make. The staff of Ulidia Integrated College will endeavour to advise and help you make the best choices in order for you to meet your educational needs. This process should be explored in full before your final selections are made.

Sixth Form is based on a two year programme of study. Students will be able to select three or four 'A' levels and/or BTEC Level 3 qualifications.

In order to progress into Sixth Form, students will normally have achieved a grade 'C' or above in GCSE English and a Grade 'C' or above in GCSE Mathematics, depending on courses wanting to be studied.

In addition to the above, students will have to attain the following, as detailed below:

- A minimum of 5 GCSEs at Grades A*- C and/or Level 2 BTEC at Grades Distinction*-Pass.
- Best 5 subjects must total at least 12 points. (This is not a guarantee of entry as other factors will be considered such as high levels of attendance and behaviour)
- The minimum entry requirements of preferred subjects must be met. This will usually be a GCSE Grade B or BTEC Level 2 Merit. (This information can be found throughout the booklet.)

It is important to note that Sixth Form courses offered at Ulidia are demanding, and require a high level of independent study. Therefore, we have to consider not just your academic achievement but also your careers path, skills, attributes and the likelihood of success.

Points will be calculated as follows:

<u>GCSE</u>	<u>BTEC (1st Award)</u>
A* = 5	D* = 5
A = 4	D = 4
B = 3	M = 3
C = 2	P = 2

Students will be ranked according to these points, with higher ranked students filling places initially.

When you receive your GCSE / BTEC results in August, you will be interviewed by either the Principal or a senior member of staff in order to finalise your preferred options and confirm your place in Sixth Form. All students will be considered on an individual basis. While every effort is made to allow pupils to follow their preferred subjects this depends on timetable and class size constraints. In the event of a course being oversubscribed, those students with the highest points score will be allocated initially. Students should be aware that the viability of all courses depends on student numbers. In the event of any course having spare capacity, entry criteria may be reviewed. The final decision regarding entrance to Sixth Form rests with the Principal

If we can be of any further assistance, please do not hesitate to contact the college and arrange an appointment with Mrs Bonar, Vice Principal or Mrs J Allen, Senior Teacher for Curriculum.

INTRODUCTION

EXTERNAL APPLICANTS

Admittance to Sixth Form

Pupils who are entering the Sixth Form from other schools must fulfil all of the above criteria.

The size of the Sixth Form intake is determined by the Principal and other senior staff within the context of the school's overall enrolment number as set by The Department of Education. The number of places available to pupils from other schools is dependent on the number of 'internal' pupils returning to Sixth Form and places to 'external' pupils are normally awarded on ranked order, based on overall points score. Those with a higher points score will be allocated a place before those with a lower points score, subject to places being available in their chosen subjects.

While every effort is made to allow pupils to follow their preferred subjects, this depends on timetable and class size constraints.

Progression from Year 13 to Year 14

It is the aim of the College that all students will study a minimum of three subjects through to the end of Year 14 that will enable them to proceed to higher education and beyond. In order to progress into Year 14, it is important that students are attaining at a level that can enable them to achieve success. Progression from Year 13 to Year 14 is not automatic but is grade dependent.

Where a parent wishes to appeal the decision by the College not to admit a pupil to Year 14, on the basis of them not meeting the requirements of the Sixth Form Agreement, they should follow the Appeals process which can be obtained from the College office.

Why choose Art & Design?

The Art & Design course is wide and full of variety so each person will find the area that they are best suited to. 60% coursework and all examination work is completed within the classroom environment. There are fantastic options for further study either at University or higher education. Careers in Art & Design are plentiful, exciting and give great job satisfaction. The course can be tailored to meet the areas of Art & Design that you enjoy and feel you can succeed in.



Entry requirements:

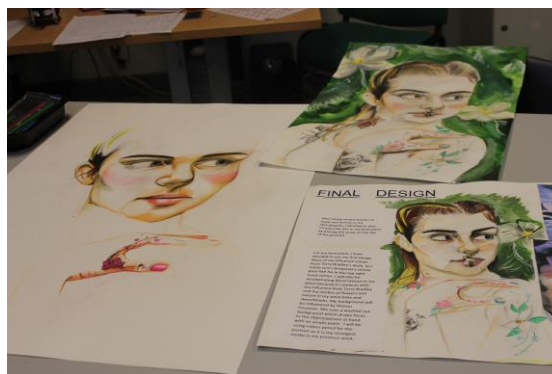
It is desirable that students have achieved a grade B in GCSE Art & Design.

The good, the bad and the ugly

You do need to be self motivated and focused. You need to really enjoy Art and be interested in it. You will have to manage your time well so that you get coursework completed on time. You have the opportunity to express your own ideas, personality and experiences through creativity. Classes have small numbers and teaching is done on a one to one discussion basis.

Course contents

The course is made up of 60% coursework and one externally set examination worth 40%. Each pupil works with two dimensional and three dimensional materials. One of these pieces will be fine art, the other design. Pupils are given a theme at the start of each project but are free to choose which area of Art & Design they want to work in. These areas include: Fashion, textiles, printing, ICT, graphics, animation, painting, drawing, sculpture, ceramics, jewellery and mixed media and others.



When you decide on your chosen area of art, you begin to research the theme in your own way. You will have to do drawings, take photographs and research other artists and designers work. After research, you will spend time planning and designing your final outcome.

Careers in Art & Design

It may surprise you to know that there are a huge number of jobs connected to Art & Design. There are excellent degree and HND courses available both locally and further afield. The following are just a small sample of jobs leading on from Art & Design.

Graphic Designer	Architect	Sculptor	Fashion Designer	Cameraman
Animator	Dental cosmetics	Teacher	Art Conservator	Weaver

For more information please speak to Mrs Mercer

Awarding Body: CCEA

By studying GCE Business Studies, you will gain a broader overview of the world of business, its functions, behaviour, and the problems and issues that face it. The AS course can be taken as a stand-alone qualification, or as the first half of an A Level qualification. If you wish to obtain a full A Level qualification, you must complete the second half of the course referred to as A2.

Why study Business Studies?

If you would like to understand more about how and why businesses operate in the way that they do, then this course will help you to achieve this. You will be able to relate what you study to everyday activities such as purchasing goods, or the services you receive as well as business news reported in the media. This course will help develop skills that you can take forward into further education or your future career.



What do I need to be able to take this course?

There are no specific subject entry requirements, but you should have achieved a minimum of a grade C in both GCSE English and GCSE Mathematics. An interest in problem-solving and decision making exercises and applying your knowledge to the different questions/scenarios presented within the areas of study are essential.

What will I study?

There are two units at AS and a further two at A2.

AS 1	In this unit you will gain an understanding of the central purpose of business activity and the different forms of business organisations. You will also study markets, demand and supply, different types of quality management, investment and productivity.
AS 2	You will learn about organisational design, communication, motivation, management and leadership styles, and investing in people. This unit will also cover the role of accounting and financial information and how this aids decision-making and financial control for businesses. You will study break-even analysis, budgets, cash flow, variance analysis and final accounts including depreciation.
A2 1	In this unit, you will learn about potential conflict between the objectives of different stakeholder groups and investigate ways to resolve such conflict. You will also study: business strategy and planning; business plans; decision tree analysis; and analyse why a business may encounter a crisis and develop a contingency plan. This unit will also cover the role of accounting and financial information. As part of this unit, you will interpret company accounts, study ratio analysis, investment appraisal.
A2 2	In this unit, you will study the macroeconomic framework of businesses and how they are affected by globalisation. This unit will also help you increase your knowledge of business ethics and corporate social responsibility. The unit also covers the area of change – its causes and effects, resistance to change and how to manage it effectively. The examination for this unit will contain an unseen case study from which you will undertake a problem-solving/decision making exercise.

How will I be assessed?

There are a total of four units in this course, two at AS and two at A2. The breakdown of the units is detailed in the following table.

Unit	Type of Assessment
AS 1: The Competitive Business Worth 50% of AS 25% of A Level	1 hour 30 minutes external examination paper and will include two structured data responses <i>Available in the Summer series</i>
AS 2: Managing Business Resources Worth 50% of AS 25% of A Level	1 hour 30 minutes external examination paper and will include two structured data responses <i>Available in the Summer series</i>
A2 1: Making Business Decisions Worth 25% of A Level	2 hour external examination paper and will include an one structured data response <i>Available in the Summer series</i>
A2 2: The Changing Business Environment Worth 25% of A Level	2 hour external examination paper and will include an unseen case study from which you will draw up a report <i>Available in Summer series</i>

What can I do with a qualification in Business Studies?

Business Studies can open up a wide range of opportunities for further and higher education or on to a rewarding career. If you wish to continue the study of Business Studies at degree level, you will need to complete the full A Level course comprising the two units at AS together with the two at A2.

Through studying this course, you will develop your knowledge and understanding of the world of business. The course will also help you acquire a range of skills such as: decision making; problem solving; interpreting and managing information; challenging assumptions; and creating solutions to problems and issues. These are all skills which are highly sought after and that can be taken forward to any future employment.



This subject can open up career choices in a wide range of jobs, for example in the commercial field such as retail, marketing, buying; human resources; public sector; professional services such as accountancy or law; banking, city markets, systems/business analyst, insurance and the media. You may of course decide to use the knowledge and skills gained through studying this course to with a view to starting up your own business.

How can I find out more?

There are a number of ways that you can find out more about studying Business Studies.

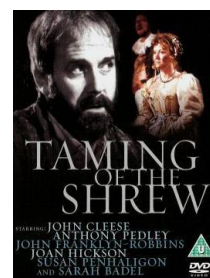
- www.ccea.org.uk/business_studies
- www.ebea.org.uk
- UCAS www.ucas.com or
- CAO www.cao.ie for details on entry requirements for university courses

To view the full specification and the full range of support material available for GCE Business Studies, please visit the for Business Studies microsite [/www.ccea.org.uk/business_studies](http://www.ccea.org.uk/business_studies)

For more information, please speak to Mrs Allen

A2 1 Shakespearean Genres – 20% of A-Level

Written examination: students communicate their knowledge and understanding of ONE play by Shakespeare.



A2 2 The Study of Poetry Pre 1900 and Unseen Poetry – 20% of A-Level

SECTION A The Study of Poetry Pre-1900.

Written examination: students explore and respond to a range of poetry by a poet they have studied. They draw on the skills developed in their AS study of poetry.

CHOICE OF Geoffrey Chaucer (The Wife of Bath's Prologue and Tale), John Donne, William Blake, John Keats, Emily Dickinson, Elizabeth Barrett Browning

SECTION B Unseen Poetry

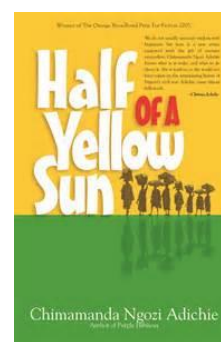
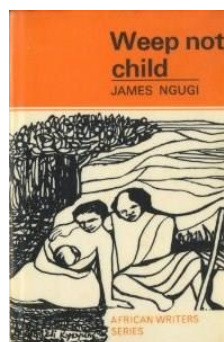
Written examination: students demonstrate critical skill and personal engagement in response to an unseen poem. Students analyse poetic methods to determine how poets shape meaning.

In this section, students experience poems from different time periods and poems with various themes, forms and poetic styles.

A2 3 Internal Assessment – 20% of A-Level

Students complete a 2500-word essay. Students engage in a detailed study of TWO NOVELS, one of which must be a twenty-first-century novel.

In this unit, students draw on skills developed in their AS study, in particular the study of prose pre 1900 in Unit AS 2, to communicate effectively their knowledge and understanding of the novel form. The unit encourages independent study, wider reading and enjoyment of modern literature.



What can you do with a qualification in English Literature?

English Literature is one of the main subjects in the Arts and Humanities family and complements subjects such as Languages, History and Politics, Moving Image Art and Performing Arts. A qualification in GCE English Literature could lead to a degree course in the Arts, Humanities and Communication.

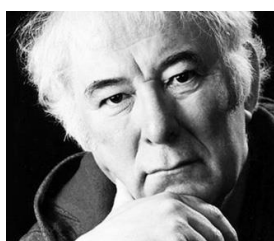
Armed with GCE English Literature you could even go straight into employment. The skills you will acquire through taking this course are in high demand from employers as well as universities and colleges. If you are interested in a career in journalism, the media or law then a qualification in GCE English Literature is a good basis for further training in these areas.

For further information, please contact Miss M. Owens

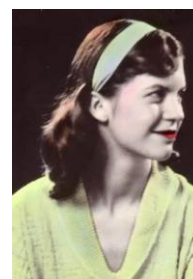
AS 1 The Study of Poetry 1900–Present and Drama 1900–Present
60% of AS and 24% of A-Level

SECTION A The Study of Poetry 1900–Present.

Written examination: analyse, evaluate, and compare and contrast a range of poetry by two poets.



Robert Frost and Seamus Heaney OR
 Ted Hughes and Sylvia Plath OR
 Elizabeth Jennings and Philip Larkin OR
 Eavan Boland and Jean Bleakney



SECTION B The Study of Drama 1900–Present.

Written examination: students communicate their knowledge and understanding of a play by a modern dramatist.

Tennessee Williams – *A Streetcar Named Desire* OR
 Robert Bolt – *A Man for All Seasons* OR
 Samuel Beckett – *Waiting for Godot* OR
 Arthur Miller – *The Crucible* OR
 Brian Friel – *Translations* OR
 Ena Lamont Stewart – *Men Should Weep*



AS 2 The Study of Prose Pre-1900
40% of AS and 16% of A-Level

Written examination: students communicate their knowledge and understanding of a novel.

Nathaniel Hawthorne – *The Scarlet Letter* OR
 Mary Shelley – *Frankenstein* OR
 George Eliot – *Silas Marner* OR
 Emily Brontë – *Wuthering Heights* OR
 Jane Austen – *Emma* OR
 Bram Stoker – *Dracula*



Entry requirements:
Priority is given to students who have a B in English Language and English Literature.

For further information, please contact Miss M. Owens

A Level Health and Social Care is an ideal qualification for those wishing to attend university or begin a career in Health and Social Care or Teaching.

On the course you will:

- Gain an awareness of the important links between Health and Social Care and other fields ranging from sociology and nutrition to ethics and education
- Gain an understanding of issues affecting the health and social sector
- Develop the skills to make an effective contribution to the care sector, including skills in research, evaluation and problem solving
- Prepare for further study and training within employment or university.
- Have the opportunity for work experience in the Health and Social Care or Education sector.

What topics will I study?

The award is divided into 6 units. You will complete 3 units in year 13 and 3 in Year 14.

AS Units

TITLE OF UNIT	ASSESSMENT METHOD	AWARD WEIGHTING
AS Unit 1: Promoting Quality Care	Internally assessed	25% of AS, 10% of A2
AS Unit 2: Communication in Health, Social Care and Early Years Settings	Internally assessed	25% of AS, 10% of A2
AS Unit 3: Health and Well-Being	Externally assessed (2 hour examination)	50% of AS, 20% of A2

A2 Units

TITLE OF UNIT	ASSESSMENT METHOD	AWARD WEIGHTING
A2 Unit 3: Providing Services	Externally assessed (2 hour examination)	30% of A2
A2 Unit 4: Health Promotion	Internally assessed	15% of A2
A2 Unit 5: Supporting the Family	Internally assessed	15% of A2

Entry requirements:

It would be advisable that candidates have at least a C in both English and Child Development and also a Distinction in BTEC Health and Social Care. However, applications will be considered for students who have not studied these subjects at Key Stage 4, provided they can demonstrate a strong interest for the subject area.

A good standard of written communication is essential. The ability to meet deadlines and work independently is also required. Students studying Health and Social Care are expected to attend a period of work experience in a health or social care environment.

Career Pathways:

Health & Social Care Policy Health Education and Health Promotion Teaching
Community Development Health Research Nursing Social Work
Occupational Therapy and Sociology

For further information, please speak to Mrs Moore.

HEALTH & SOCIAL CARE - BTEC Level 3 Subsidiary Diploma in Health and Social Care

This qualification is aimed at learners who are interested in a career in Health and Social Care.

The BTEC Level 3 Subsidiary Diploma in Health and Social Care consists of three mandatory units:

- Unit 1 – Developing Effective Communication in Health and Social Care.
- Unit 2 – Equality, Diversity and Rights in Health and Social Care.
- Unit 3 – Health, Safety and Security in Health and Social Care.

Teachers then choose optional units from the following:

Optional Units

Unit	Unit Title
4	Development through the Life Stages
10	Caring for Children and Young People
11	Safeguarding Adults and Promoting Independence
20	Promoting Health Education
21	Nutrition for Health and Social Care
25	Coping with Change
27	Dealing with Challenging Behaviour

Assessment:

All units are internally assessed through written portfolio work. Learners will complete a total of 60 credits (6 units).

Progression:

This qualification will lead on to a further qualification in Health and Social Care, for example, an NVQ Diploma or any other relevant Health and Social Care qualification at university.

Entry Requirements:

It would be advisable that candidates have at least a Merit in BTEC Level 2 Health & Social Care or equivalent. However, applications will be considered from students who have not studied Health and Social Care at Level 2, provided they can demonstrate a strong interest in working in Health and Social Care.

The ability to meet deadlines and work independently is also required. Students studying Health and Social Care are expected to attend a period of work experience in a health or social care environment

For further information, please speak to Mrs Moore.

INFORMATION TECHNOLOGY (BTEC LEVEL 3 DIPLOMA)

What is the Level 3 BTEC Diploma in ICT?

Due to the success and popularity of ICT at Ulidia, we have decided to run a Diploma in ICT, which is worth 120 Credits. This will take 720 classroom hours, broken down to approximately 19 hours of ICT over a 2 week timetable, spread over the two years. There are three compulsory units (1, 2 & 3) and the following four have been chosen to create a broad technological course for you to follow, not just focusing on the creative aspects as with the single award. There is no examination, so you will easily be able to check your progress by following a cover sheet for each unit. The following units are covered:

Edexcel Level 3 BTEC Diploma in ICT	
Unit	Core units
1	Communication and Employability Skills for IT
2	Computer Systems
3	Information Systems
Unit	Specialist units
6	Software Design and Development
9	Computer Networks
12	IT Technical Support
25	Maintaining Computer Systems
28	Website Production
30	Digital Graphics
31	Computer Animation
40	Computer Game Design
43	Multimedia Design

Employment opportunities

With the international recognition of BTEC courses such as this, you can progress straight into employment. If successful, there are a wide variety of potential careers that you can explore, within sectors such as the growing computer games industry, product development, technical support, web design, graphic design, technical sales and telecommunications. Jobs that are commonly taken after completion of the qualification are: Computer Service Technician and Computer Operator.

Minimum Entry Requirements:

You need to achieve a minimum of a C grade in your GCSE Maths and a Merit in Level 2 BTEC ICT or a C+ in GCSE ICT to be accepted onto the BTEC Diploma in ICT.

For more information contact Mr Barnard or Mr Meharg

INFORMATION TECHNOLOGY (BTEC LEVEL 3 SUBSIDIARY DIPLOMA)

Edexcel BTEC Level 3 Subsidiary Diploma in IT

The Edexcel BTEC Level 3 Subsidiary Diploma in IT is a 60-credit and 360-guided-learning-hour (GLH) qualification that consists of six units. It is largely equivalent to 1 x A' Level. The units are as follows:

Unit 1: Communication and Employability Skills for IT (60 Lessons)

Communication skills are key to success in any sector but are particularly important in highly technical sectors, such as IT, where the language used can become full of jargon. It is important that learners are able to communicate with non-technical staff and understand when different types and vehicles of communication are appropriate.

The aim of this unit is to ensure that learners understand both the personal attributes valued by employers and the principles of communicating effectively whilst developing effective communication skills and addressing their own personal development needs.

Unit 2: Computer Systems (60 Lessons)

At some stage, most IT professionals will have to set up and customise a computer system or systems. To do so effectively, they will need to understand the components that make up computer systems. The operating system interacts with the hardware and software components in order to make a functioning machine.

The aim of this unit is to enable learners to understand the components of computer systems and develop the skills needed to recommend appropriate systems for business purposes and set up and maintain computer systems

Unit 9: Computer Networks (60 Lessons)

Networks are used in one way or another by virtually every organisation, from simple use of internet services through internal file sharing to wide area networks exchanging data across continents. Therefore, it is essential that learners thinking of careers within the IT industry have a good understanding of the underlying principles of networking and how data travels around networks.

The aim of this unit is to ensure learners understand the key components of networked systems, know about network protocols and the services provided by network systems and develop the skills required to ensure network security.

Unit 28: Website Production (60 Lessons)

The number of websites on the worldwide web has increased dramatically and competition is very high. This means that designers must use increasingly sophisticated techniques to capture interest, as well as ensuring that an appropriate company image is presented. Usability issues, such as navigation methods, must be considered carefully. A poorly-designed structure could result in users becoming confused or frustrated and navigating away from the website.

The aim of this unit is to enable a learner to understand web architecture and the factors that affect its performance and to be able to design and create interactive websites. Students use Wordpress and Dreamweaver to design their own live website.

Unit 30: Digital Graphics (60 Lessons)

Technology enables the production and reproduction of images to all scales, sizes and colours. High-capacity storage devices, digital cameras, specialist software and printers mean that high quality and appropriate images can be designed and produced more easily than before. There is now little excuse for not creating documents that use graphic images effectively.

This unit aims to enable learners to understand different types of digital graphics images and file formats and to be able to create, edit, modify and manipulate digital images of various types and complexity using Adobe Photoshop.

Unit 31: Computer Animation (60 Lessons)

Computer animation is the art of creating moving images through the use of computers. It brings together computer graphics and animation techniques. Animation does not require computers; however the increasing ability of computers to create and manipulate sets of images has allowed basic animation to reach new levels of sophistication and realism.

The aim of this unit is to ensure learners understand types of animation and their uses and develop the knowledge and skills required to use software techniques to design and implement different types of animation.

Entry requirements:

A minimum of at least a Merit in BTEC Level 2 Award in ICT. or GCSE C+ in ICT.

For more information, please speak to Mr Barnard or Mr Meharg or visit the EdExcel ICT BTEC website <http://www.edexcel.com/Subjects/BTEC-IT>

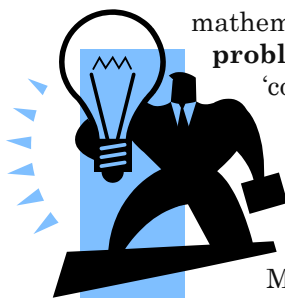
Mathematics at AS and Advanced GCE is a course worth studying not only as a supporting subject for the physical and social sciences, but in its own right. It is challenging but interesting. Practically, Maths helps us put a price on things, create graphics, build websites, build sky scrapers and generally understand how things work or predict how they might change over time and under different conditions.



- Maths is one of the best subjects to **develop** your analytical, research and problem solving skills.
- It will give you the **knowledge** to tackle scientific, mechanical, coding and abstract problems
- It will help you **develop logic** to tackle everyday issues like planning projects, managing budgets and even debating effectively

Is this the right subject for me?

Mathematics is rather different from many other subjects. An essential part of mathematical study is the **challenge of analysing and solving a problem** and the satisfaction and confidence gained from achieving a 'correct' answer.



If you choose mathematics you will not have to write essays, but you will need to be **able to communicate well** in written work to explain your solutions in a structured manner.

Mathematics is not about learning facts. You will not achieve success by just reading a textbook or by producing and revising from detailed notes... you actually **need to 'do' Mathematics**.

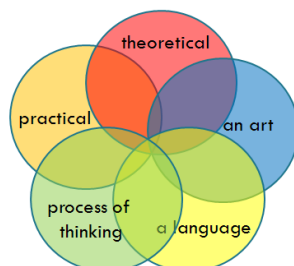
Assessment

For **AS Level** you will take 3 units (C1, C2 and M1) and for a full **A Level** you will take a further 3 units (C3, C4 and S1)

- One written examination per unit lasting 1 hour 30 minutes, each worth 75 marks
- Calculators can be used for all unit examinations except C1
- C1, C2, C3 and C4 - Pure Mathematics, M1 – Mechanics and S1 – Statistics



Mathematics is ...



What can I do after I've completed the course?

- A level Mathematics is very valuable as a supporting subject to many courses at Advanced GCE and degree level, especially in the sciences and geography, psychology, sociology and medical courses.
- There are also many areas of employment that see a Mathematics GCE as an important qualification.
- Higher Education courses or careers that either require A Level Mathematics or are strongly related include:
 - Computer Programming
 - IT
 - Games Development
 - Economics
 - Engineering
 - Accountancy
 - Finance
 - Medicine
 - Architecture
 - Teaching
 - Psychology
 - Physics
 - Actuarial Science
 - Consultancy
 - Scientific Research
 - Construction

According to the *Russell Group* informed choices guide,

“Maths is a *“facilitating” subject, which means that it will help you to study lots of other subjects and pursue lots of different careers.”*

Entry Requirements:

- **Students must have achieved at least a Grade B at Higher Tier in GCSE Mathematics**
- **Pupils must have completed T4 & T6 modules at GCSE**
- **A GCSE in Further Maths is helpful, but not compulsory**

For further information, please contact Mrs O'Rourke or Mrs Allen

GCE Moving Image Arts is the first course of its kind in the UK. This is taught in our Digital Arts Suite. The course covers the technical skills necessary to produce film and animated sequences, for example:

Lighting techniques Sound recording Editing Digitization

You will also learn about the important processes involved in pre-production, such as:

**Script development Location selection
Character development Storyboarding**



Q. Why study GCE Moving Image Arts?

Whether accessed through cinema, television, DVD or the Internet, moving images act as a primary source of information and knowledge about the world. Moving Image Arts is therefore critical to understanding and interpreting contemporary society.

Q. What does the course consist of?

Coursework is worth 60%. The online examination is worth 40% and is the first AS examination in Northern Ireland to be completed online.

Q. What do I need to take this course?

As two of the units are assessed by online examination, you should have basic keyboarding and word processing skills. No previous experience in moving images is necessary.

Q. What will I study?

- You will study film language.
- You will learn about the different technical roles and work practices involved in moving image production (director, cinematographer, editor, art director, set designer, etc).
- Cinematic realism and formalism will be the key Areas of Study, drawing attention to important examples of personal expression in the history of cinema.
- The inter-relationship between the moving image and other art forms, disciplines and practices will be the focus of the course, highlighting the interdisciplinary nature of moving image production.

The AS (Advanced Subsidiary)/A2 structure of this GCE means you can study for the AS Level award, completing units AS1 and AS2 and then decide if you wish to continue to A2 level where you will complete the two additional units: A2 1 and A2 2. This will lead to an award for the full Advanced GCE.

Q. What can I do with a qualification in Moving Image Arts?

Rapid growth of digital media technologies has made the creative industries increasingly accessible and attractive to young people. The GCE in Moving Image Arts introduces you to this exciting and enterprising field while also embedding skills that will benefit you in a host of additional pursuits.



The benefits of Moving Image Arts extend beyond a career in film or animation. Transferable skills like resource management (time, people and budgets), planning, problem solving, negotiation, and communication are also strengthened through the course activities.

Careers in Moving Image Arts:

It may surprise you to know that there are a huge number of jobs connected to photography. There are excellent degree and HND courses available both locally and further afield. It is an advisable choice if you wish to attend Art College. The following are just a small sample of jobs leading on from Photography.

Set Designer Sound Production Director Script-writer Stylist

Television Film-maker Teacher Creative Director

Gallery management/Curator Advertising/Promotion

**Minimum entry requirements:**

You should have achieved a minimum of a Grade C in GCSE English. It is not essential to have studied Moving Image Art before but basic keyboarding skills are necessary. An interest in film making, editing and directing is essential.

Students who undertake this course will be expected to have access to their own equipment if required.

For more information, please speak to Mrs Mercer

PERFORMING ARTS (Acting) BTEC Level 3 Subsidiary Diploma (One A-Level)
 BTEC Level 3 Diploma (Two A-Levels)

Examining Board EDEXCEL
 You will study the following mandatory units:



BTEC Level 3 Subsidiary Diploma	BTEC Level 3 Diploma
Unit 7: Performing to an Audience	Unit 1: Performance Workshop
Unit 19: Principles of Acting	Unit 7: Performing to an Audience
	Unit 3: Performing Arts Business
	Unit 19: Principles of Acting

BTEC Level 3 Subsidiary Diploma students and **Level 3 Diploma** students will also study **additional** units chosen from an interesting list which include:

- **Devising Plays**
 - **Theatre for Children**
 - **Auditions for Actors**
 - **Movement in Performance**
 - **Developing Physical Theatre**
 - **Classical Theatre Performance**
 - **Performing with Masks**
 - **Musical Theatre Performance**
- And many more*



About the Course

This BTEC course is designed to provide a specialist work-related qualification.

Students studying Performing Arts (Acting) will organise events/projects which will provide them with practical understanding of the skills required to develop careers within the Performing Arts and related industries. It provides a pathway into higher education, principally BTEC Higher Nationals and Degree courses in Performing Arts.

Entry Requirement:

Due to the written portfolio nature of this course, Performing Arts students should have a grade C or above in GCSE English or equivalent. Students should also either have a grade C or above in GCSE Drama or an M+ in BTEC Performing Arts.

In the absence of having studied either of these subjects, the student must have a keen interest in performing to an audience, and, in the event of the course being oversubscribed; preference will be given to those who have experience either in school productions or through membership of a local theatre group.

Students studying Performing Arts are expected to become actively involved in extra-curricular performances and will be required to attend rehearsals out of class time. This will include students being available for occasional Saturday morning and evening rehearsals.

For more information, please speak to Mrs McColgan

Examination Board: **AQA**.

Course content:

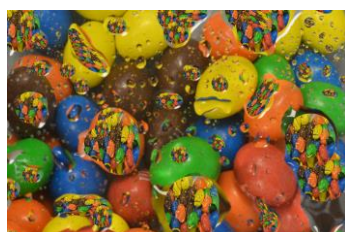
The course is made up of 60% coursework and one externally set assignment (ESA) worth 40%.

There is no formal written exam. All work completed in school and home.



For AS, each pupil must complete one coursework portfolio project and an externally set assignment project. Pupils are free to choose a theme such as portraiture, the human form, landscapes, still life and experimental imagery for the coursework project.

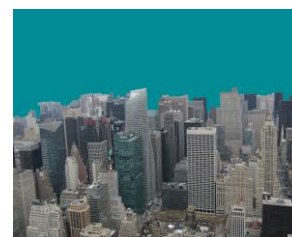
When you decide on your chosen area, you begin to research the theme in your own way. You will have to research in depth, take photographs and experiment. Research, analyse and evaluate other artists, photographers and designers work. After research, you will spend time planning and selecting your final outcome.



AS/A2 Photography

A range of key concepts will be explored and learned – such as Composition, Framing and Close up. Digital photography is used with the exploration of the computer manipulation package 'Photoshop'. Candidates will explore a wide range of images, resources and genres relating to photography.

The course requires a high level of independent thought, research and experimentation. The use of workbooks/sketchbooks will underpin every project. Within this you will be expected to analyse and evaluate images, critically in a written format.



- You do need to be self motivated and focused.
- You need to be an imaginative and creative person who is interested in visual arts.
- You will have to manage your time well so that you get coursework completed on time
- You have the opportunity to express your own ideas, personality and experiences through creativity.
- Classes have small numbers and teaching is done on a one to one discussion basis.

Careers connected with Photography

It may surprise you to know that there are a huge number of jobs connected to photography. There are excellent degree and HND courses available both locally and further a field. It is an advisable choice if you wish to attend Art College or interested in Graphic/Web/product Design. The following are just a small sample of jobs leading on from Photography:

Graphic Designer Product Designer Interior Designer Architect
Fashion/brand manager Stylist Television Film
Magazine Editor/Styling Web Designer Fashion Photographer
Photo Journalist Sports Photographer Wedding Photographer
Professional Photographer Professional Artist Teacher
Creative Director Gallery management/Curator Advertising/Promotions

Entry Requirement:

YOU DO NOT NEED TO HAVE GCSE ART& DESIGN!!! However Grade C or above at GCSE Art & Design or Moving Image Arts and English is desirable.

An interest or strong enthusiasm for photography is essential and you must be able to get out and about to take photographs.

Students who undertake this course will be expected to have access to their own equipment if required.

For more information, please speak to Miss Bamford

Entry requirements:

You will have studied one of the following options at GCSE, and achieved the relevant grade.

- Full Course Religious Education at Grade B **or**
- GCSE English Language or Literature Grade B **or**
- Short Course Religious Education at Grade A

**Overview of the Course:**

AS LEVEL 2 topics are studied	
<p>AS1: An Introduction to the Gospel of Luke</p> <p>Within this topic, the following themes are studied:</p> <ul style="list-style-type: none"> • Religious & Political Background • Introduction to the Gospel of Luke • Selective Narratives in Luke's Gospel • The Words (parables) of Jesus • The Deeds (miracles) of Jesus 	<p>AS4: The Christian Church in the Roman Empire: Beginnings, Expansion and External Pressure</p> <p>Within this topic, the following themes are studied:</p> <ul style="list-style-type: none"> • Expansion of Christianity • Church Government • Persecution • Constantine • Early Christian Thought
A2 LEVEL 2 further topics are studied	
<p>A2 1: The Theology of the Gospel of Luke</p> <p>Within this topic, the following themes are studied:</p> <ul style="list-style-type: none"> • The Function and Role of Biblical Criticism • Lukan Christology • Religious Themes • The Theological Significance of the Words and Deeds of Jesus • Interpreting Luke 	<p>A2 4: The Continued Development of Christian Church in the Roman Empire to AD325</p> <p>Within this topic, the following themes are studied:</p> <ul style="list-style-type: none"> • Church Life and Worship • Heresy and Schism • Defining the Faith • Christian Writers • Council of Nicaea



Assessment:

- AS: 2 external examinations (1 hour and 20 minutes each)
- A2: 2 external examinations (2 hours each)
- The AS unit makes up 40% of the full A Level, and the A2 units make up 60%

**Career opportunities:**

Jobs directly related to studying Religious Education include that of an RE Teacher at Secondary level, a Primary Teacher and Lecturer, or a job within the Church. Jobs in which the study of Religious Education would be very useful include: Advice Worker, Charity Officer, Civil Service Administrator, Community Development Worker, Editorial Assistant, Newspaper Journalist, Social Worker and Youth Worker.

The skills gained through the study of Religious Education are highly respected and sought after by many potential future employers.

For more information, please speak to Miss R Murphy

This new and innovative qualification has been developed in partnership with Northern Ireland industry (e.g Almac, Norbrook) and drawing on expertise from our 2 local universities.

Across Northern Ireland, this is a fast growing employment sector which generates **£800 million per year** and is **growing by 12% annually** – **employing 70,000 people**. (2015 MATRIX sector Report)

These qualifications are ideal for those students who want a highly sought after qualification with a broad background in science. It will allow them to progress to higher education, further training and/or employment in a wide range of career paths.

Course Structure

There are a range of exam and portfolio units; developing strong laboratory skills is a key feature.

This course has 16 units available to choose from: 6 at AS level and 10 units at A2.

YEAR 13

At AS level, **all** students must complete:

- Unit AS 1: Experimental Techniques;
- Unit AS 2: Human Body Systems; and
- Unit AS 3: Aspects of Physical Chemistry in Industrial Processes.

In addition, students working towards a **Double Award** qualification must complete:

- Unit AS 4: Brain Science;
- Unit AS 5: Material Science; and
- Unit AS 6: Medicine, Drugs and Clinical Trials.

YEAR 14

At A2, **all** students must complete:

- Unit A2 1: Scientific Method, Investigation, Analysis and Evaluation; and
- Unit A2 2: Organic Chemistry.

The **Single Award** qualification also includes any 1 of these 3 optional units and the **Double Award** includes any 2:

- Unit A2 3: Medical Physics;
- Unit A2 4: Sound and Light; and/or
- Unit A2 5: Genetics, Stem Cell Research and Cloning.

In addition, the **Double Award** qualification includes any 2 of these 5 optional units:

- Unit A2 6: Microbiology;
- Unit A2 7: Oral Health and Dentistry;
- Unit A2 8: Histology and Pathology;
- Unit A2 9: Analytical Chemistry Techniques; and/or
- Unit A2 10: Enabling Technology.



Health and Life Sciences career possibilities:

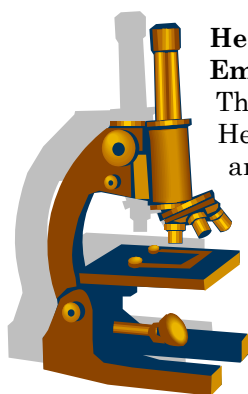
Employment

These qualifications are relevant to employment in various science sectors:

Health care, Medical and Laboratory based science, Chemical industry, Leisure and associated industries, Food and catering industries.

Higher Education

Provides a sound basis for progression to a range of science based degree courses: Physiotherapy, Pharmacy, Radiotherapy, Speech Therapy, Biochemical Science, Food Technology, Forensic Science, Nursing, Medical Physics, Materials Science, Engineering, Zoology, Sports Science, Human Physiology to name just some of the possibilities.



Entry requirements:

High grades in two Science GCSEs (preferably BB), provides the necessary foundation. A good standard of Mathematics and English is needed (preferably C or above)

For further information, please speak to Mr Glass

SPORT STUDIES – BTEC LEVEL 3 SUBSIDIARY DIPLOMA - DEVELOPMENT, COACHING & FITNESS - EDEXCEL

BTEC Subsidiary Diploma in Sport = 1 A Level

The Level 3 BTEC course in Sport is designed to provide a specialist work-related qualification in a range of sectors. The BTEC Subsidiary Diploma in Sport has been developed to provide preparation for further education and employment in the field of sport.

- Students are expected to become actively involved in Sports Development, assisting with sports activities within the Carrickfergus community.
- Students will have the opportunity to work along side PE teachers, gaining experience in the care of children and young people.
- Students will gain an extensive knowledge in the area of anatomy and physiology.
- Students will become involved in the preparation of sports teams, understanding the importance of both physical and mental aspects of their performance.
- Students will become actively involved in the design of training programmes and testing the athletes involved.

The BTEC Subsidiary Diploma in Sport **consists of 7 units.**

Units 1-4 are Mandatory as set out by Edexcel

Units:

1. Principle of Anatomy and Physiology
2. The Physiology of Fitness
3. Assessing Risk in Sport
4. Fitness Testing for Sport and Exercise
5. Fitness Training and Programming
6. Exercise, Health and Lifestyle
7. Sports Development or Practical Team Sport*

* Unit 7 - Students will complete either Sports Development or Practical Team Sport
This will depend on the Ulidia Timetable on a year by year basis.

Career Pathways

Areas of specialisation for BTEC Sport Studies students include such careers as PE Teacher, Coaching, Fitness Instructor and Outdoor Adventure leader.

Entry requirements:

Due to the written portfolio nature of this course, Sports Studies students should have a grade C or above in GCSE English.

Students should also either have a grade C or above in GCSE Physical Education or a Merit overall in BTEC Sport Studies. In the absence of studying GCSE PE or BTEC Sport Studies, students should have achieved a GCSE Science qualification grade C or above and be a participating member of a sports club.

Enhanced criteria may be applied in the event of this course being oversubscribed.

For further information, please contact Mr Donnelly or Mrs Brady

Ulidia Integrated College

SPORT STUDIES – BTEC LEVEL 3 DIPLOMA – DEVELOPMENT, COACHING AND FITNESS - EDEXCEL

BTEC Diploma in Sport = 2 A Levels

The Level 3 BTEC course in Sport is designed to provide a specialist work-related qualification in a range of sectors. The BTEC Subsidiary Diploma in Sport has been developed to provide preparation for further education and employment in the field of sport.

- Students are expected to become actively involved in Sports Development, assisting with sports activities within the Carrickfergus community.
- Students will have the opportunity to work along side PE teachers, gaining experience in the care of children and young people.
- Students will gain an extensive knowledge in the area of anatomy and physiology.
- Students will become involved in the preparation of sports teams, understanding the importance of both physical and mental aspects of their performance.
- Students will become actively involved in the design of training programmes and testing the athletes involved.

The BTEC Diploma in Sport consists of **13 units**.

Units:

1. Principle of Anatomy and Physiology
2. The Physiology of Fitness
3. Assessing Risk in Sport
4. Fitness Testing for Sport and Exercise
5. Fitness Training and Programming
6. Exercise, Health and Lifestyle
7. Sports Development
8. Practical Team Sport
9. Instructing Physical Activity
10. Leadership in Sport
11. Sports Coaching
12. Organising Sports Events
13. Work Experience in sport

Career Pathways

Areas of specialisation for BTEC Sport Studies students include such careers as PE Teacher, Coaching, Fitness Instructor and Outdoor Adventure leader.

Entry requirements:

Due to the written portfolio nature of this course, Sports Studies students should have a grade C or above in GCSE English.

Students should also either have a grade C or above in GCSE Physical Education or a Merit overall in BTEC Sport Studies. In the absence of studying GCSE PE or BTEC Sport Studies, students should have achieved a GCSE Science qualification grade C or above and be a participating member of a sports club.

Enhanced criteria may be applied in the event of this course being oversubscribed.

*For further information, please contact Mr Donnelly or Mrs Brady
Ulidia Integrated College*

OCR A Level Travel and Tourism

The travel and tourism industry is dynamic, wide-ranging and fast-growing, and it offers a huge variety of employment opportunities for young people. Many students may wish to carry this on into University. We have a number of former students who have continued Travel and Tourism right through to University. Including placements in America!



The Geography Department at Ulidia Integrated College has established a good working relationship with local universities and also with national employers through regular visits and work experience opportunities. The Geography department at Ulidia Integrated College have a reputation of producing high quality teaching and learning experiences through our Ambassador Environmental Education Programme.

COURSE OUTLINEAS GCE Travel and Tourism (H189)***AS Unit G720: Introducing travel and tourism – Externally Assessed***

This unit will provide an overarching understanding of one of the world's fastest-growing industries. Students will investigate the reasons for the rapid growth in the modern travel and tourism industry and understand why it is commonly referred to as 'the world's biggest industry'. Within this unit, students will develop vocational skills related to the travel and tourism industry: in particular, selecting and interpreting appropriate data, problem solving and understanding and applying industry-related terminology.

AS Unit G721: Customer service in travel and tourism- 100% Coursework

The travel and tourism industry is made up of a number of organisations that provide very similar products and services. It is often the quality of customer service that distinguishes one organisation from another. In this unit students will find out about the key principles and skills of customer service and how travel and tourism organisations aim to provide excellent customer service to their different types of customers.

AS Unit G722: Travel destinations - 100% Coursework

Having a sound knowledge of the location of popular travel destinations, along with what they can offer visitors, is very important for anybody working, or hoping to work, in the travel and tourism industry. This unit will enable candidates to build a sound knowledge of the major short-haul and long-haul destinations for UK tourists by researching a variety of destinations. Within the unit students will develop vocational skills, such as those needed to identify and locate tourist-receiving and tourist-generating areas.

Advanced GCE Travel and Tourism (H589)***A2 Unit G728: Tourism development - Externally Assessed***

Tourism development is occurring throughout the world. As someone hoping to work in the travel and tourism industry, students need to know about the organisations involved, which sectors they belong to and the roles they play in enabling the development of tourism in an area. Students will learn about aims and objectives of tourism development throughout the world and the positive and negative impacts of tourism development in the UK and overseas.

***A2 Unit G729: Event management - 100% Coursework***

This unit will consolidate the work candidates have been undertaking throughout the course, connecting the knowledge and understanding of different aspects of travel and tourism which learners have studied in other units. It will give learners the opportunity to work as part of a team to plan, carry out and evaluate a real travel and tourism project that is of interest to them.

This unit involves organising a school trip; therefore this unit will include a travel opportunity.

A2 Unit G731: Ecotourism - 100% Coursework

There are many definitions of ecotourism or 'green tourism'. However, the term is used to describe any recreational activity in natural surroundings. Students will learn that, although the events of September 11th 2001 had a major impact on the tourism industry and made it difficult to predict long-term trends, ecotourism is a growing component of the wider tourism industry, and several factors indicate that it is likely to succeed and grow over time.

Please note that course content details may change prior to September 2017.

**Entry Requirements:
A grade C or above in GCSE English**

In the event of the course being oversubscribed, preference will be given to those students who have studied Travel and Tourism at KS4.

For more information, please speak to Mrs Patterson