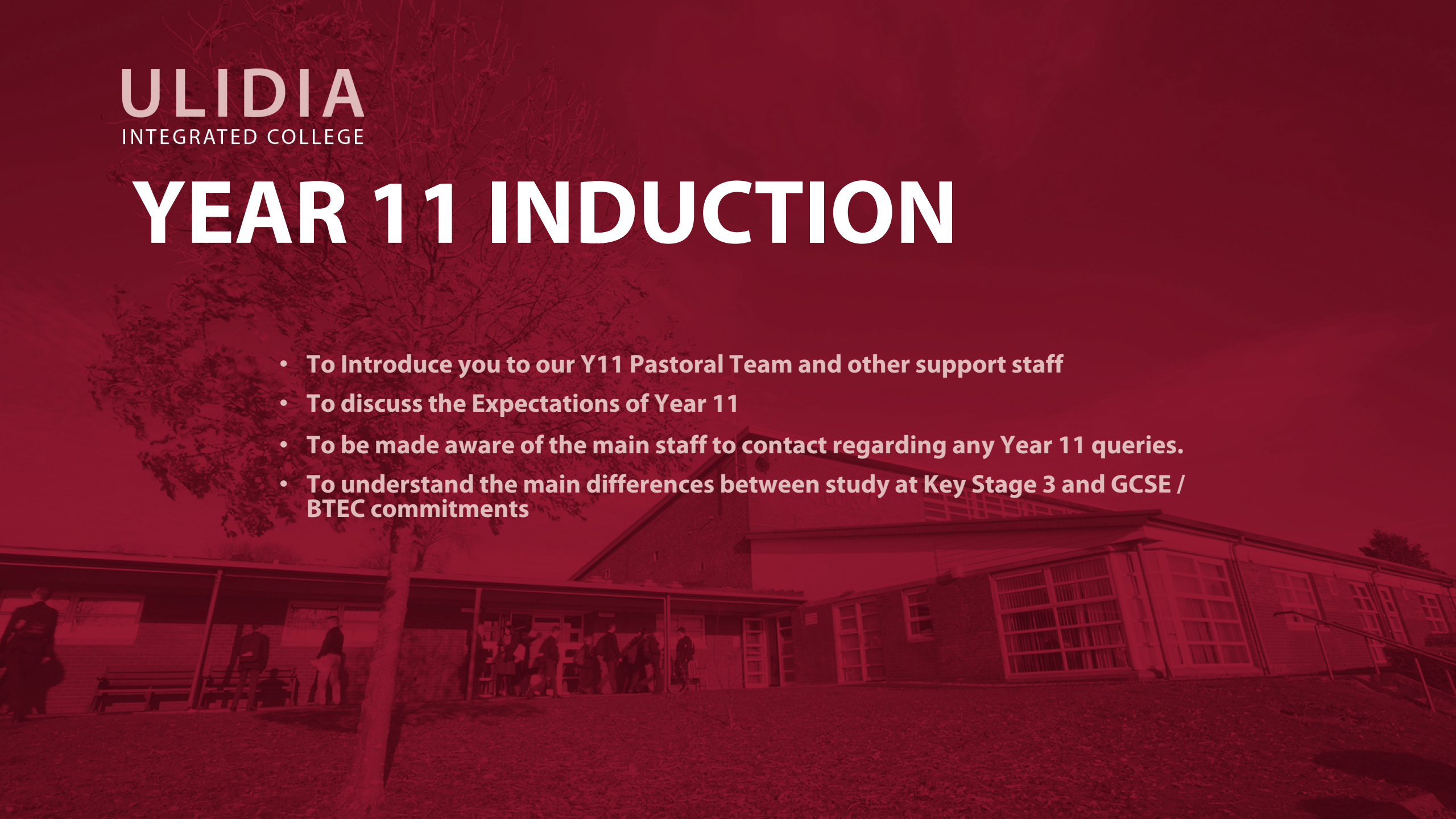


ULIDIA
INTEGRATED COLLEGE

YEAR 11 INDUCTION

- To Introduce you to our Y11 Pastoral Team and other support staff
- To discuss the Expectations of Year 11
- To be made aware of the main staff to contact regarding any Year 11 queries.
- To understand the main differences between study at Key Stage 3 and GCSE / BTEC commitments



Year 11 Pastoral Team 😊

11BLL



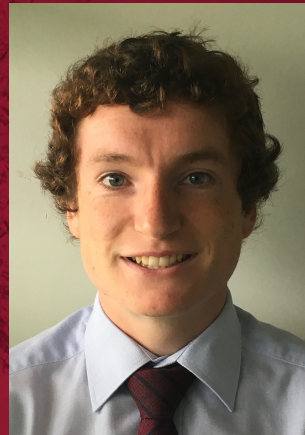
Mrs Bell

11FRD



Mrs Ford

11FTT



Mr Fittis

11GLP



Mrs Gillespie

11RDM



Dr Young
Covering for
Mrs Schmidt

AIM

To support our students in partnership with parents to ensure that our young people achieve, not only academically, but also develop the skills and attributes which are essential to success not only this year but also later in life.

Morning Pastoral Program

	Monday	Tuesday	Wednesday	Thursday	Friday
Week 1	Organisation Check. Absences / Attendance	PERSONAL READING / Numeracy Activity / Study Skills	DISCUSSION/ RESEARCH / READING - NEWS / Current Affairs.	Wellbeing & Rewards.	Credits and Totals for the week.
Week 2	Organisation Check. Absences / Attendance	Form Assembly	DISCUSSION/ RESEARCH / READING - NEWS / Current Affairs.	Wellbeing & Rewards.	Credits and Totals for the week.

Ulidia Support Staff

**Head Of
Pastoral Care /
Child
Protection**



Mrs D Ward

**SENCO / Child
Protection**



Mrs McColgan

**Child
Protection**



Mrs Howe

**Vice Principal –
Curriculum -**



Mrs Campbell


Concerns Procedures:

Pastoral Concerns / Issues

Please make Contact with Form Tutor directly to report any concern, this will be passed on to myself if necessary.

Students can also message their Form Tutor directly via their Google Classroom Via the **NEED TO TALK** assignment.

Need to Talk

Need to Talk?!

Edited 14:37

No due date

Hi everyone,

Please use this assignment as a way to message myself or Mr Farmer privately if you ever need us.
No one else will see the message.

Looking forward to hearing from you.
Mrs Ford 😊

View assignment

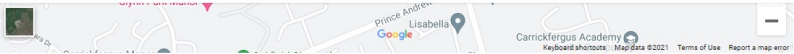
0

24

Handed inAssigned

ULIDIA
INTEGRATED COLLEGE

[ABOUT](#)[ADMISSIONS](#)[VACANCIES](#)[PARENTS](#)[PUPILS](#)[SIXTH FORM](#)[LINKS](#)[CONTACT](#)



Your Name (required)

My Name

Your Email (required)

Insert Email

Subject

Concerns regarding my child

Your Message

Example:

Mrs Bell, if possible would you please contact me. I need to discuss an issue regarding my son/daughter.

Regards

Parent/Guardian

SEND

Ulidia Integrated College
112 Victoria Road
Carrickfergus
Co. Antrim
BT38 7JL

Tel: 028 9335 8500
Email: info@ulidiacollege.com

[Contacting School Via the School website:](#)

www.Ulidia.com

Via email.

Please send a short message stating the member of staff you are requesting to contact and request a call. You may wish to keep the contents confidential.

The member of staff will be forwarded the contact request and get back to you in due course.

Safeguarding Concerns:

www.Ulidia.com

Child Protection / Safeguarding Concerns

Student and or Parent –

Speak directly to any member of the Child Protection Team / Safeguarding Team.

Confidentially message the Safeguarding Team by clicking the following link. This is also accessible via the Pastoral Classrooms.

Head Of
Pastoral Care
/ Child
Protection



Mrs D Ward

SENCO / Child
Protection



Mrs McColgan

Child
Protection



Mrs Howe

ULIDIA
INTEGRATED COLLEGE

ABOUTADMISSIONSVACANCIESPARENTSPUPILSSIXTH FORMLINKSCONTACT

SAFEGUARDING TEAM

🏠 / PUPILS / SAFEGUARDING TEAM

Even though we are all working remotely, pupils still have the opportunity to contact us for pastoral support, especially if they are seriously struggling or circumstances at home are putting them at risk.

Pupils can contact their Form Teacher and Head of Year through their Form Class Google Classroom if they need to talk or are not feeling so good.

They can also contact the Safeguarding and Child Protection Team: Mrs Ward, Mrs Howe and Mrs McColgan by using the following email address:

safeguardingteam@ulidiacollege.com

Messages to this email address should only be sent when a young person is at serious risk or if they are in situation that puts them in danger.

PUPILS

ASSESSMENT TIMETABLES

CANTEEN

COVID REMOTE LEARNING HELP

EMA GUIDANCE

EXAM INFORMATION

EXTRA-CURRICULAR TIMETABLE

MOCK EXAM TIMETABLE

OFFICE 365

SAFEGUARDING TEAM

STUDENT COUNCIL

ULIDIA

INTEGRATED COLLEGE

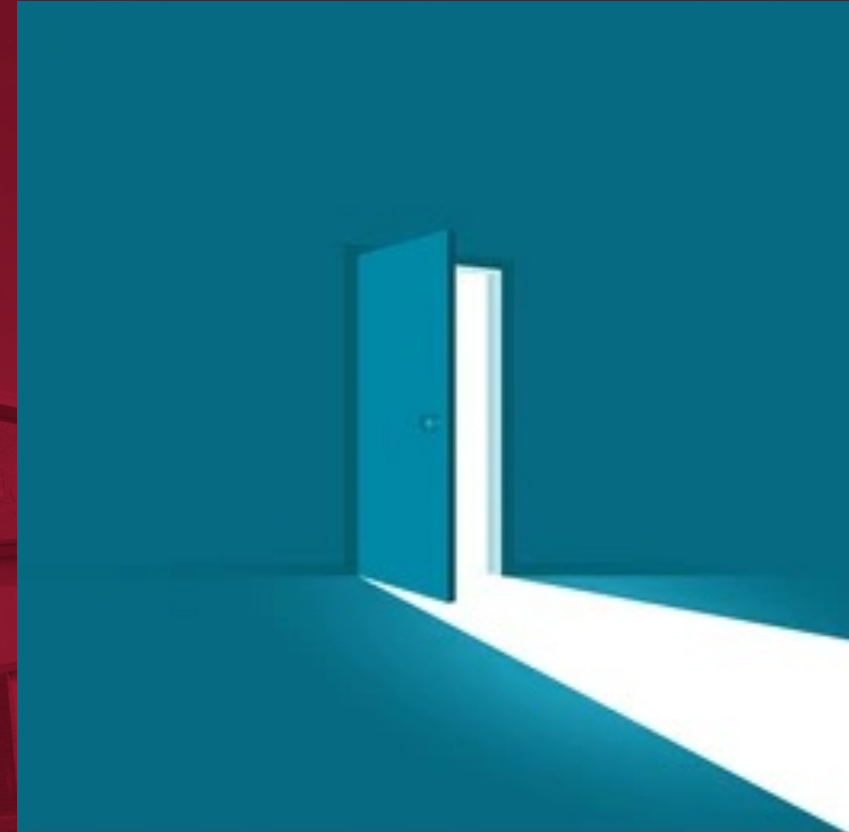
Please note, if you need to speak to a member of staff urgently our doors are always open.

A member of the school office staff will take your number and inform the member of staff you need to speak to them.

The member of staff will get back to you as soon as it is convenient.

URGENT CONTACT:

Please phone: **028 9335 8500**



ULIDIA
INTEGRATED COLLEGE

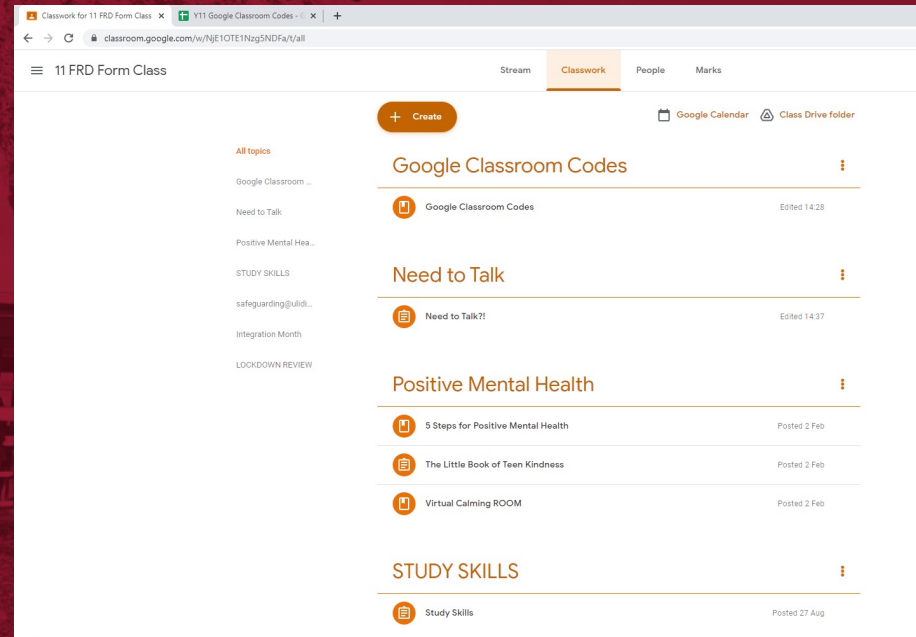
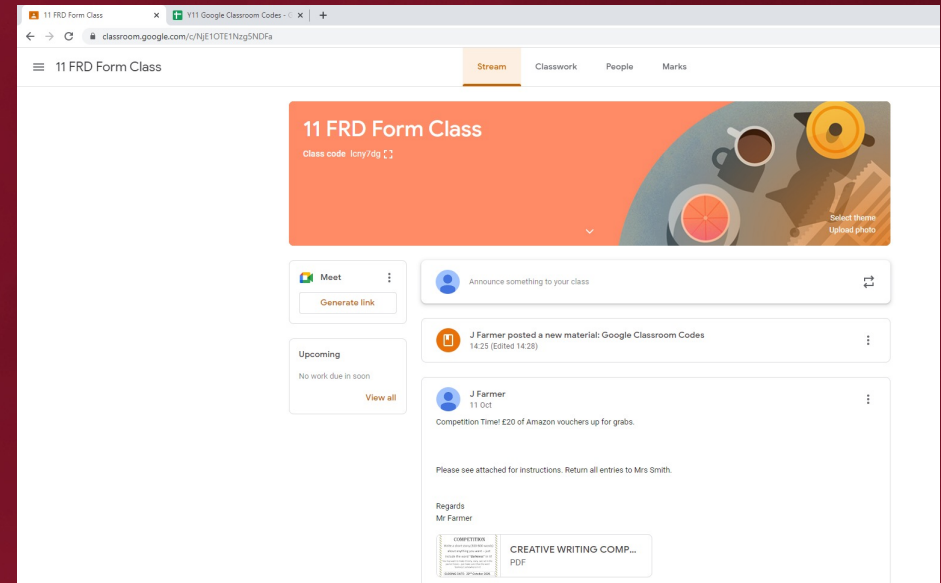
Google Classroom:

Pastoral Classroom Codes:

BLL	r7coqlh
FRD	lcny7dg
FTT	xawbobc
GLP	sd7q5rm
RDM	77gko7s

(Students Only)

Used For:
Class Announcements



Assignment Examples:

Google Classroom Codes
Need To Talk
Positive Mental Health
Study Skills
Competitions

Google Classroom:

Reminder:

When Signing In please ensure you child uses their user name when accessing Google Classroom.

Problems can occur when accessing this from Android devices.

Best Strategy:

Access by searching GOOGLE CLASSROOM on the browser.

Sign in using the following:

USER SIGN IN: [\(insertusername\)@c2ken.net](mailto:(insertusername)@c2ken.net)

Followed by their school password.

Note: If students are completing Google Documents as part of their class assignments they **MUST** download the relevant google apps to allow them to this.

Password Issues:

C2K Password Reset

If you need to reset your C2K password please email **passwordreset@ulidiacollege.com** with your:

- Name
- Year Group
- C2k Username

Positive Y11 Habits that will promote Success

Organisation

Being Prepared for class with the correct books, work and equipment. Use the school planner effectively.

Building Good Study Habits

Develop a Study Timetable, there is no such-thing as no homework. Revise and Review work daily.

Removing Distractions – External and Internal.

Stay on Top of Coursework and stick to deadlines.

Maintaining Positive Behaviour

Stay positive, Positive attitude equals success and reduces stress.

Positive behaviour brings rewards in terms of in school rewards and also academic reward.

Attendance

‘Students are more likely to succeed in academics when they attend school consistently.’

Students should AIM for 100%.

Students who miss school frequently can fall behind with their work and do less well in exams.

Copying up missed work

Contact Subject Teachers via assignments on Google Classroom if off Isolating.

Speak to Subject teachers and classmates to find out what has been missed.

Photocopy missed notes if necessary on one of the many school Printers/Photocopiers.

Ask for help if needed and use the homework clubs to help support catching up.

Positive approach to learning and Behaviour.

A2L – Attitude 2 Learn

Reward Structure:

- Arrive on time
- Bring all necessary books and equipment
- Show respect to others at all times
- Ask for help if needed

Rewards

Credits are totalled weekly in Form Class.

Credits are awarded by teachers for a positive and outstanding approach to learning.

These credits can be converted to rewards that could include: Canteen vouchers and other Class rewards.

Reporting:

Grading Structure

- A1 – Outstanding learner
- A2 – Committed learner
- A3 – Inconsistent learner
- A4 – Underperforming learner
- A5 – Cause for concern

(Page 4 – Student Planner)

Tracking Dates:

Tracking 1 – Week Beginning 15th-26th November 2021

Year 11 Consultation - 5th January (Tracking Results and Target Setting)

Tracking 2 – Week Beginning 31st January 2022

Internal Examinations – 26th May – 1st June

Thank you

For:

Your Continued Support ☺

Your child's success relies on the partnership between School and Home continuing to be a positive one.

Please continue to enforce the uniform policy as indicated on 12 of our students planners. This is an essential part of normalising school after lockdown and establishing a serious approach to learning and school.

Thank you for continuing to encourage positive relationships with staff. This makes it considerably easier when we need to have conversations with students in order to change behaviours that affect their performance in school.

Thank you for ensuring your child attends school on a regular basis. I understand the difficulties and pressures you may be under and I thank you for your persistence in ensuring your child is present and ready for the school day.

Useful Links:

ULIDIA
INTEGRATED COLLEGE

ABOUTADMISSIONSVACANCIESPARENTSPUPILSSIXTH FORMLINKSCONTACT

🏠 / PUPILS / OFFICE 365



PUPILS

ASSESSMENT TIMETABLES
CANTEEN
COVID REMOTE LEARNING HELP
EMA GUIDANCE
EXAM INFORMATION
EXTRA-CURRICULAR TIMETABLE
MOCK EXAM TIMETABLE

OFFICE 365

SAFEGUARDING TEAM
STUDENT COUNCIL
THE SCHOOL DAY

Microsoft Office 365 available for FREE!

Due to our subscription to the C2K network, we are happy to offer the newest version of Microsoft Office 365 as a free download to all our students on PC and Mac.

Office 365 is web-based, meaning that it can be installed on 5 devices (including iPad and Android tablets) and their documents are available on each device providing there is an internet connection available.

Once the student leaves Ulidia, their 365 account will no longer work, so it is important they save their documents before the account is deactivated.

Instructions can be found by viewing the document below:

 [Downloading Office 365 for Students](#)

ULIDIA
INTEGRATED COLLEGE

ABOUTADMISSIONSVACANCIESPARENTSPUPILSSIXTH FORMLINKSCONTACT

EXAM INFORMATION

🏠 / PUPILS / EXAM INFORMATION

Click here to read the [JCQ Plagiarism Guidance](#)

Click here for the [Latest BTEC Plagiarism Advice](#)

Revision and Exam Guidance

1. <http://www.bbc.co.uk/bitesize> – a useful bank of games and resources to help with revision
2. <http://www.s-cool.co.uk> – a website specifically aimed at GCSE and A Level pupils
3. <http://www.u2learn.com/> – KS3, GCSE, A-Level Revision & fun learning links for all ages
4. <http://www.revisionworld.co.uk/> – GCSE and A Level Revision Materials
5. <http://www.projectalevel.co.uk/> – Revision site for Biology, Business Studies, Computing, Economics, Geography, Maths and Physics
6. <http://www.examzone.co.uk/home/> – Provides all the information you need to help you prepare for Edexcel exams
7. <https://corbettmaths.com/> – Videos, worksheets, 5-a-day and much more.

Useful documents to help both students and their parents cope better with exams:

1. [Coping With Exams](#)
2. [Good Intentions In Exams](#)
3. [Organising and Working With Information](#)
4. [Understanding Exams](#)
5. [Revision – A Parents Guide](#)

PUPILS

ASSESSMENT TIMETABLES
CANTEEN
COVID REMOTE LEARNING HELP
EMA GUIDANCE

EXAM INFORMATION

EXTRA-CURRICULAR TIMETABLE
MOCK EXAM TIMETABLE
OFFICE 365
SAFEGUARDING TEAM
STUDENT COUNCIL
THE SCHOOL DAY

CEM – Target Grades for GCSE

Vice Principal –
Curriculum -



Mrs Campbell

	Level 2						Level 1				Unclassified
GCSE (CCEA/WJEC)	A*	A		B	C		D	E	F	G	U
GCSE (AQA/OCR)	9	8	7	6	5	4	3	2		1	U
BTEC	*2 Dist*	D2 Dist		M2 Merit		P2 Pass	P1 Pass				U
Occ. Stud.	D2 Dist			M2 Merit		P2 Pass	D1 Dist	M1 Merit	P1 Pass		U